

Route 106 & Route 152 Corridor Improvements Pre-25% Design (Plainville & North Attleborough)

November 25, 2024

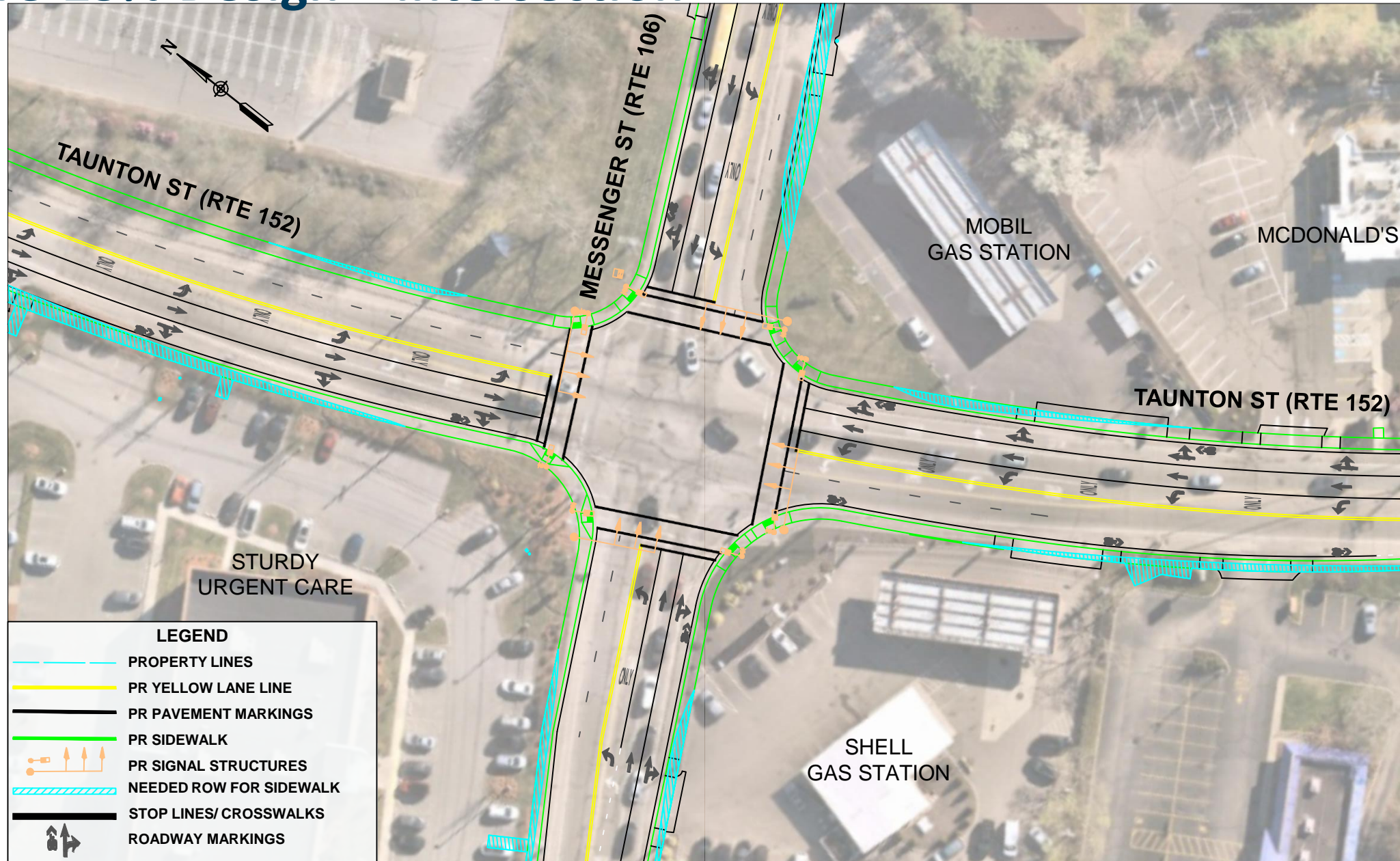
*Plainville
Select Board*



Imagery Source: Nearmap Imagery Date: April 2024



Pre-25% Design – Intersection



Follow-Up Crash History with Plainville Police Data

Taunton Street (Route 152) at Messenger Street (Route 106)

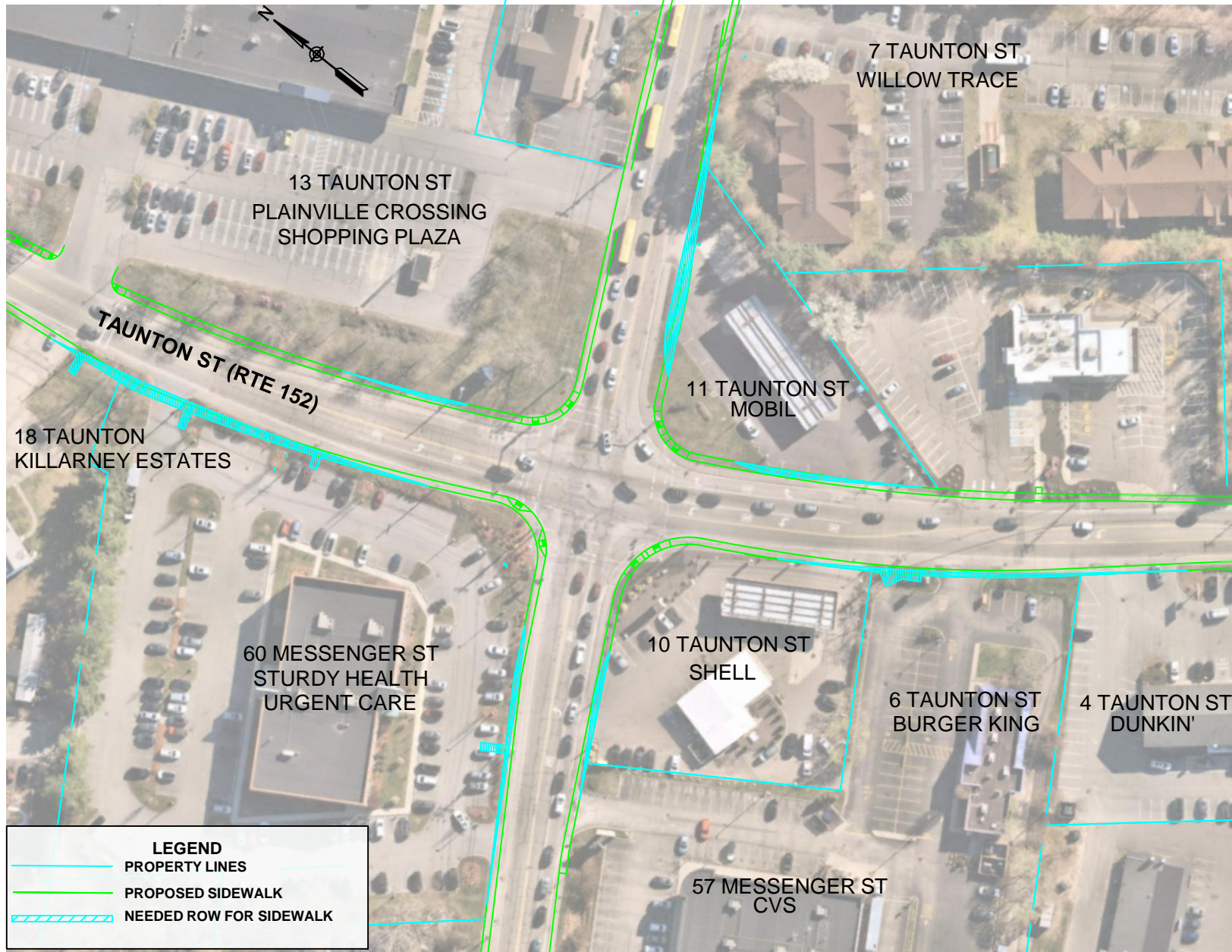
- 371 crashes occurred between 2013 and 2023
- Many crashes took place at nearby driveways
- 56 (21%) resulted in injuries
- 155 (42%) were Angle Type Collisions
- 134 (36%) were Rear-End Type Collisions
- Crash Rate – **2.57**

Average Crash Rate for Signalized Intersections

Statewide *0.78*

District 5 *0.75*

Pre-25% ROW Exhibition– Overview

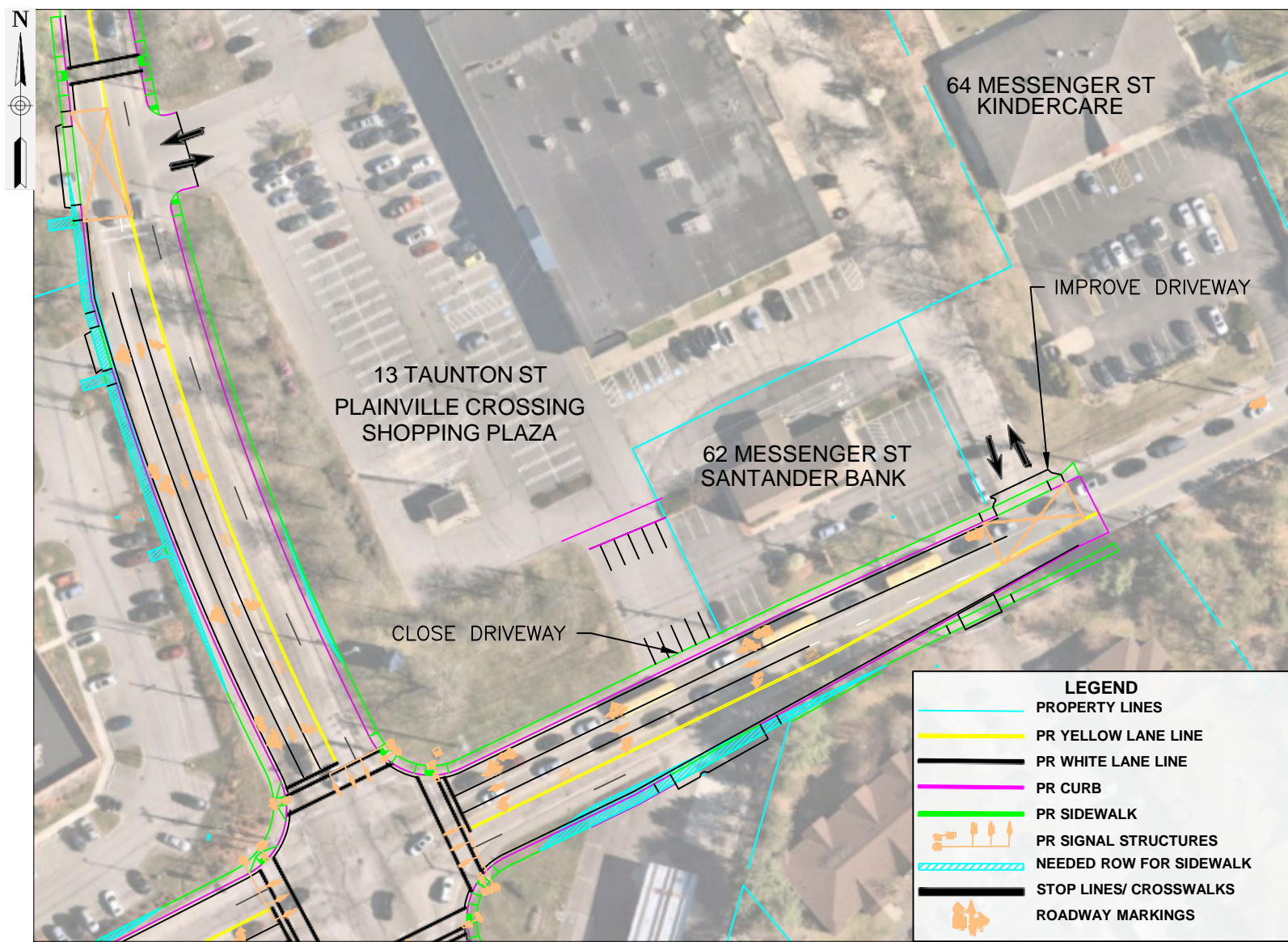


Existing Condition: Utility Pole Considerations

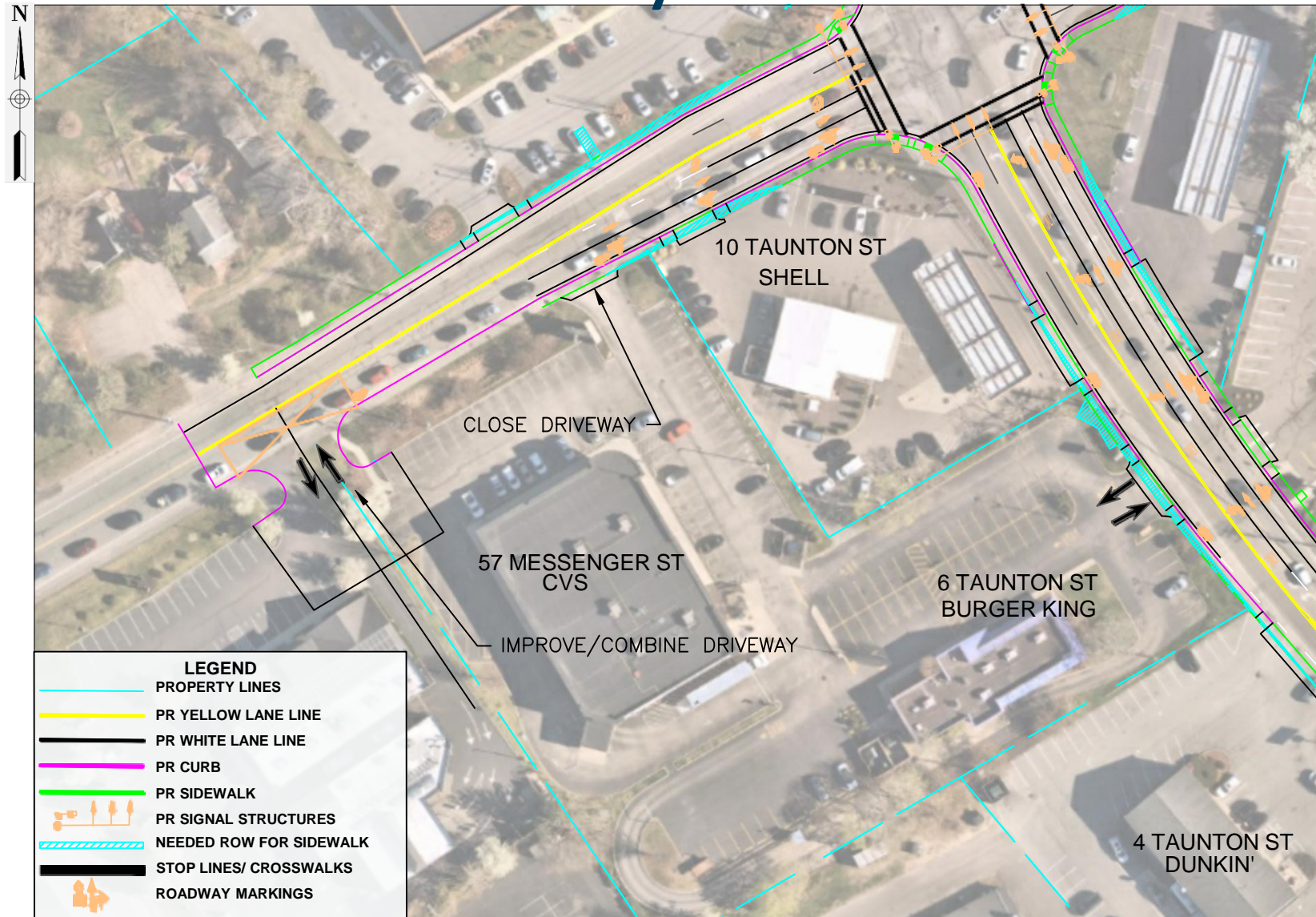
- **Approximate cost to move utility pole could be upwards of \$500k, as this is a major junction for intersecting large transmission power lines. The effects of moving one pole effects all poles in each direction.**
- **The relocation of one major pole will trigger additional Right of Way costs in all four directions of the intersection**



Improved Access Control: Alternate Driveway Plainville Crossing



Improved Access Control: Improve and Move CVS Driveway from Intersection



Next Steps

- **Continue discussion with affect property owners; already initiated outreach to property owners at 64 Messenger St and 2 Wilkins Drive**
- **Advance Pre-25% Design to 25% Design Submittal**
- **Execute Contract for Final Design (25% through Advertisement) with North Attleborough**

Thank You!

Bill O'Rourke

Director of Plainville Public Works

Mike Mullen

Director of Plainville Planning & Economic Development

190 South St, PO Box 1717,
Plainville, MA 02762
p. 508-695-3010